

Manage Baud Rate with OP Manager



Installation

OP Manager is a mobile application designed for handheld devices. You can download OP Manager from the following link or scan QR code from your phone:

<https://tespro.ca/en/op-manager>



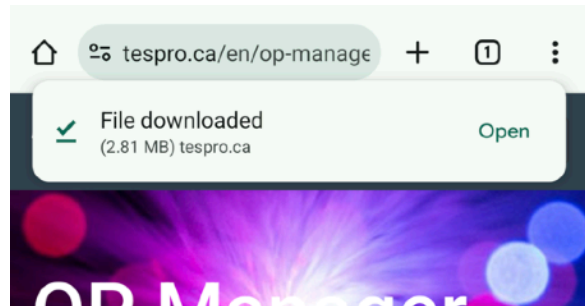
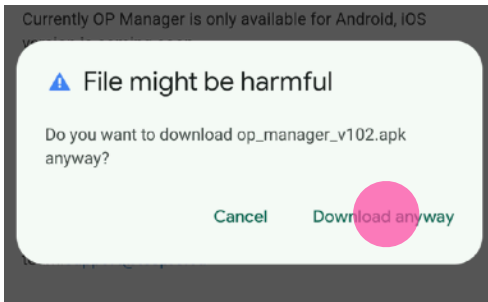
Install from Google Play

We would recommend to install OP Manager from Google Play, which is easier and safer. But once you can't access Google Play, you can also download the latest installation package from our website.

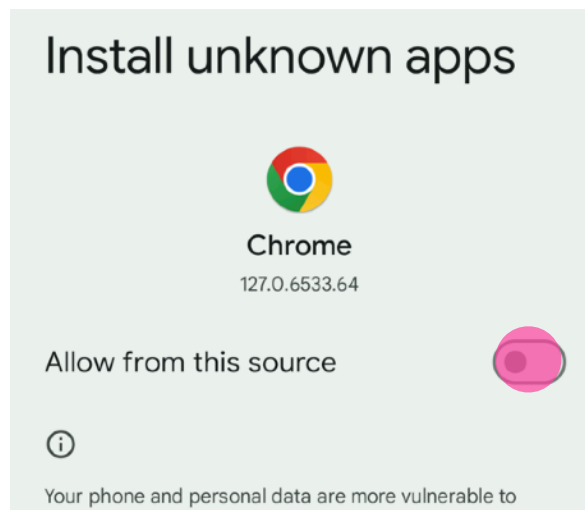
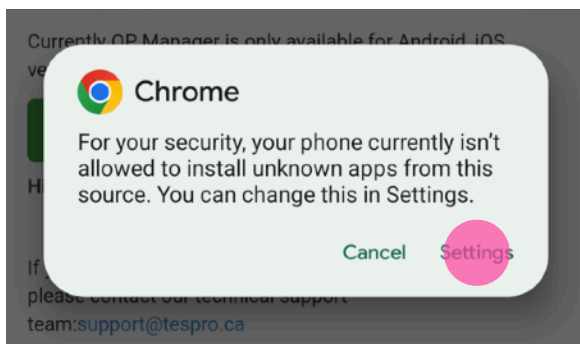


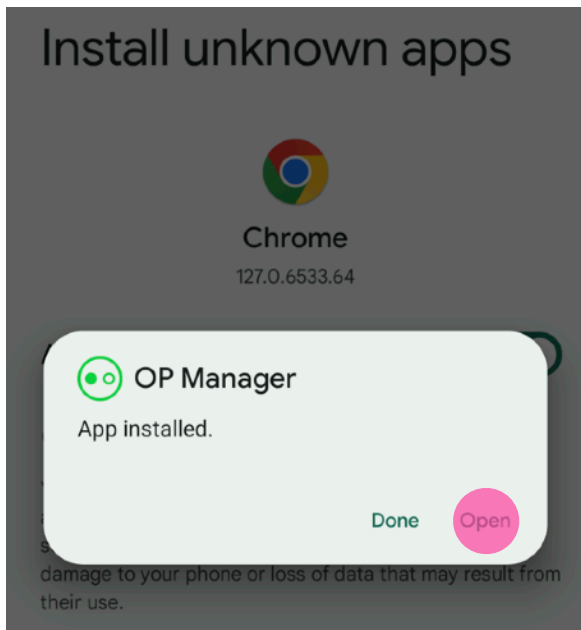
Install and Permissions

When downloading OP Manager, your Android system may request permission. Please allow the download, as our app is designed solely to transfer data to OP Series optical probes.



After downloading, tap "Open" to proceed with installation. Since OP Manager is not yet available on Google Play, Android may prompt you to allow installations from unknown sources. Please grant this permission.

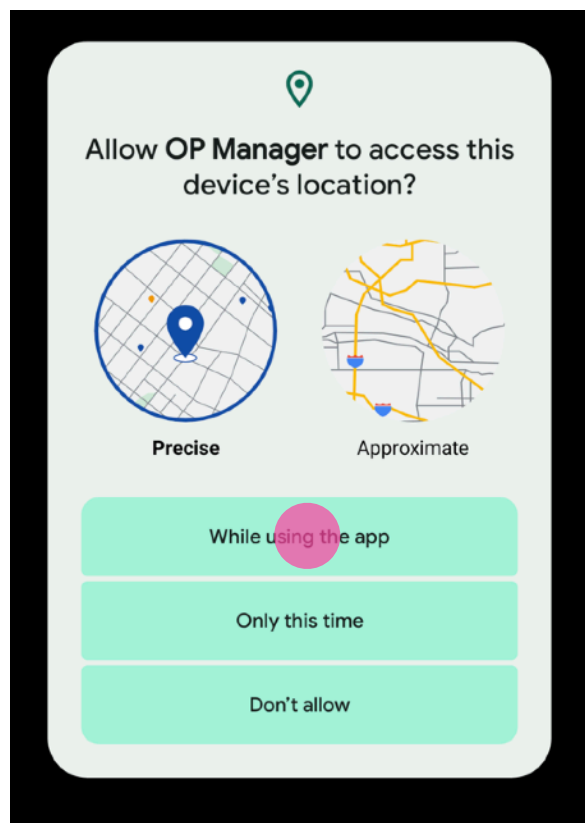




Once installed, tap “Open” to launch the app. OP Manager will require the following system permissions:

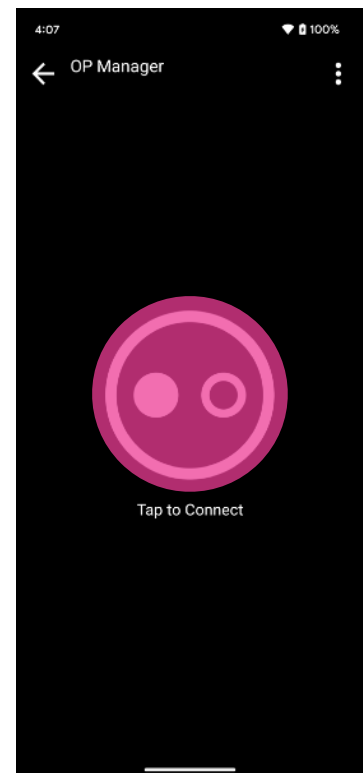
- Access Location
- Access Nearby Devices

Please authorize these permissions, as they are necessary for OP Manager to connect to OP-BTS/BT Optical Probes via Bluetooth.



Connect and Check Status

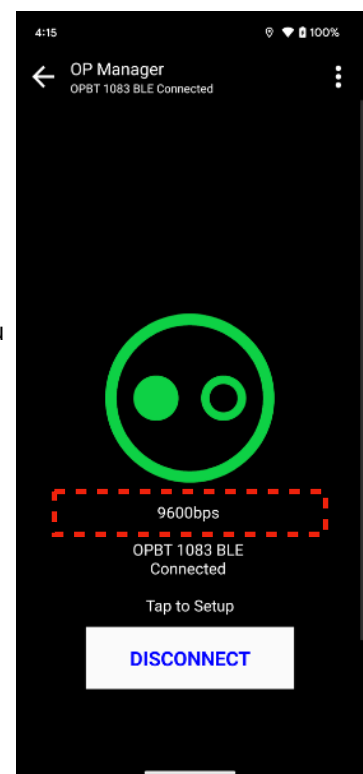
When you launch OP Manager, you will see a gray optical probe icon, indicating no devices are currently connected.



Turn on your OP-BTS/BT, then tap the optical probe icon.

After a moment, a list of nearby optical probes will appear.

You can also tap "Search" from the menu to initiate a new search.



Select the device you want to connect to. The optical probe icon will turn green, displaying the device name and baud rate below it.

Please note, the baud rate displayed reflects the communication speed between the optical probe and the meter and is unrelated to the Bluetooth connection with your phone. Common baud rates in the metering industry are 9600 and 19200 bps, depending on the meter model.

Technical Support



To seek more technical support topics, please visit our technical support page online.

<https://tespro.ca/en/support>

or contact us by email: support@tespro.ca

Business Headquarter

Address: 25 Red Oak Drive
Richmond Hill, ON
Canada L4B 1V5

Manufacturing & Shipping

Guangdong, China

Official Website

<https://tespro.ca>
<https://zenovate.tech>

Contact Us

Sales and Quotation:
sales@tespro.ca

Technical Support:
support@tespro.ca

General Information:
info@tespro.ca



TESPRO CORP. is a Canadian company
with factory in China.