

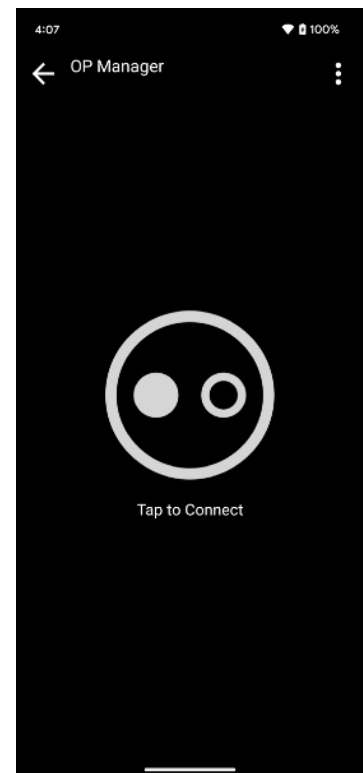
# Manage Baud Rate with OP Manager



# Connect and Check Status

When you launch OP Manager, you will see a gray optical probe icon, indicating no devices are currently connected.

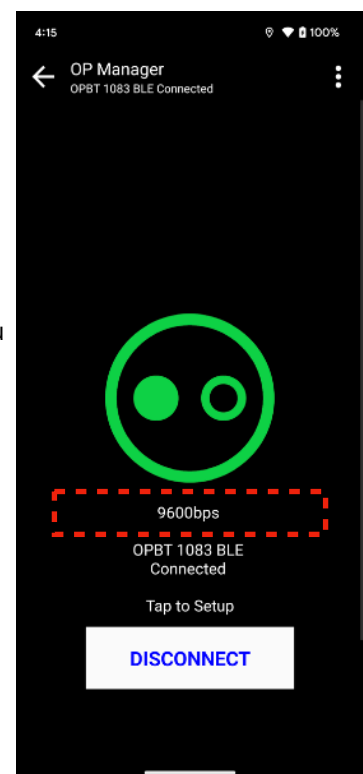
Tap the big optical probe icon in the center to search devices nearby.



Turn on your OP-BTS/BT, then tap the optical probe icon.

After a moment, a list of nearby optical probes will appear.

You can also tap "Search" from the menu to initiate a new search.



Select the device you want to connect to. The optical probe icon will turn green, displaying the device name and baud rate below it.

Please note, the baud rate displayed reflects the communication speed between the optical probe and the meter, which is unrelated to the Bluetooth connection with your phone. Common baud rates in the metering industry are 9600 and 19200 bps, depending on meter model.

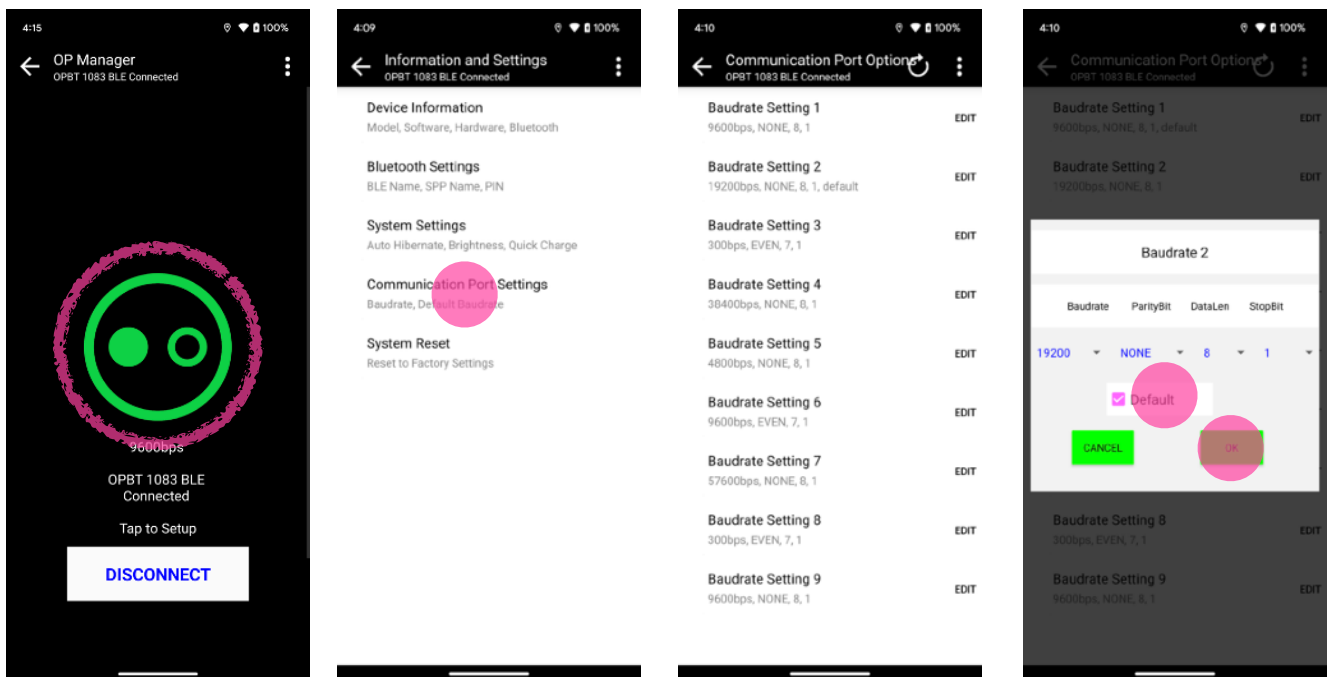
# Set Default Baud Rate

With OP Manager, you can change the default baud rate of the OP-BTS/BT. Once the new default baud rate is set, restart the device, and the default baud rate will be updated.

Steps to Change Baud Rate:



Tap the green optical probe icon to access the settings. Then select "Communication Port Settings" and choose your desired baud rate. Check "Default" and tap "OK" to save the settings.



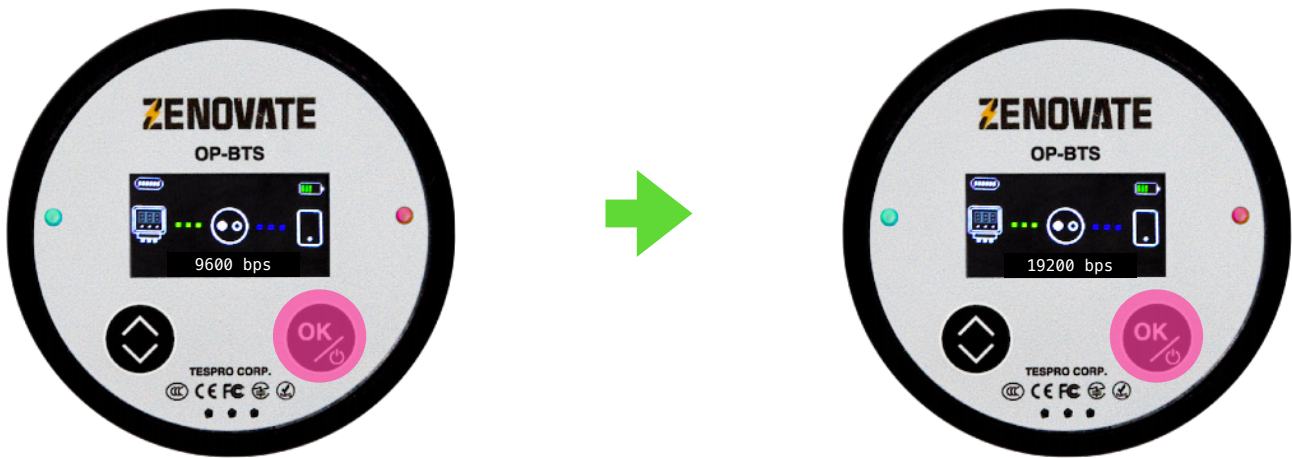
Tap on green optical probe icon to enter settings page.

Choose the baud rate settings you want.

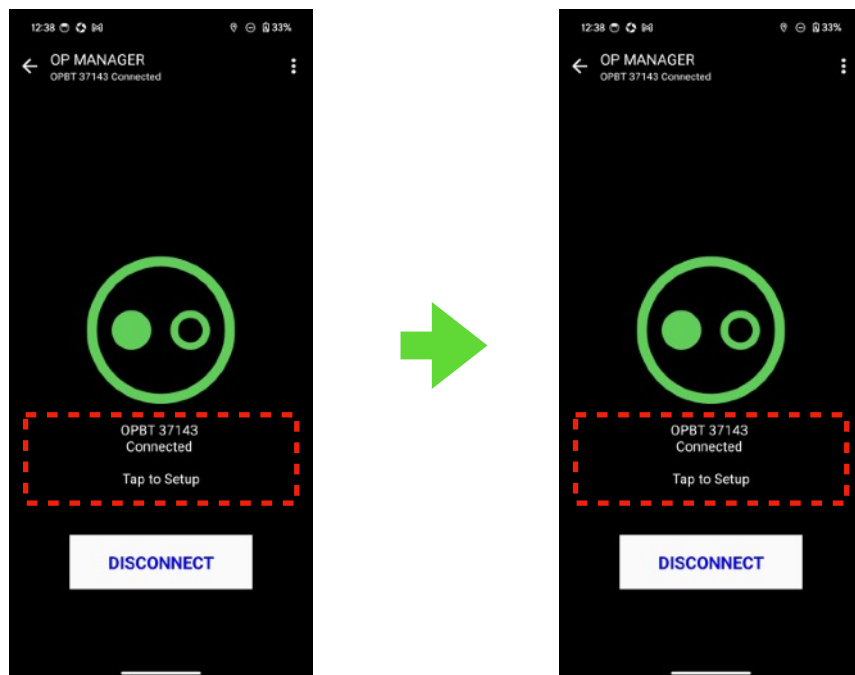
Check "Default" and tap "OK".

In this case, we chose 19200 bps.

Long press the power button to turn the device off and back on. The baud rate on device screen and OP Manager will now reflect the new setting.



On device screen is only available on OP-BTS. Real time baud rate is available from OP Manager for all models.



# Technical Support



To seek more technical support topics, please visit our technical support page online.

<https://tespro.ca/en/support>

or contact us by email: [support@tespro.ca](mailto:support@tespro.ca)

---

## Business Headquarter

Address: 25 Red Oak Drive  
Richmond Hill, ON  
Canada L4B 1V5

## Manufacturing & Shipping

Guangdong, China

## Official Website

<https://tespro.ca>  
<https://zenovate.tech>

## Contact Us

Sales and Quotation:  
[sales@tespro.ca](mailto:sales@tespro.ca)

Technical Support:  
[support@tespro.ca](mailto:support@tespro.ca)

General Information:  
[info@tespro.ca](mailto:info@tespro.ca)



TESPRO CORP. is a Canadian company  
with factory in China.